

Nordea

# User guide

Corporate Access – Test Tool



## Table of contents

<b>1</b>	<b>CORPORATE ACCESS TEST TOOL</b> .....	<b>3</b>
<b>2</b>	<b>GENERAL OVERVIEW OF THE TEST TOOL SERVICES</b> .....	<b>3</b>
<b>3</b>	<b>USER GUIDE FOR TESTING ISO20022 XML MESSAGES</b> .....	<b>3</b>
3.1	ERRORS.....	6
3.2	WARNINGS.....	7
3.3	COMPLIANCE CHECK (PAIN.002.001.03).....	7
3.4	CONTENT BUSINESS VALIDATION (PAIN.002.001.03).....	8
3.5	STATUS REPORT FOR CANCELLATION REQUESTS (CAMT.029.001.03).....	8
3.6	DEBIT ADVICE REPORTING (CAMT.054.001.02 DEBIT NOTIFICATION).....	9
3.7	IF CORPORATE ACCESS TEST TOOL DO NOT RESPOND CORRECTLY.....	9
<b>4</b>	<b>CORPORATE ACCESS ENVELOPE VALIDATION TOOL</b> .....	<b>10</b>
4.1	CHECKING THE MESSAGE.....	10
<b>5</b>	<b>CORPORATE ACCESS TEST TOOL TECHNICAL HELP</b> .....	<b>11</b>
5.1	IF TEST TOOL DOES NOT START.....	12

## 1 Corporate Access Test Tool

Nordea Corporate Access Test Tool is available here [Link](#)

The tool uses the Java Web Start application, so you will need at least version 1.5 of the Java Runtime module. If you have issues with starting the tool, please go to chapter 5.1.

This tool is a “stand alone” tool, i.e. it is not connected to Nordea’s real production systems why Nordea cannot guarantee that the provided result via this tool will in all cases reflect exactly as processed or responding as when the input file(s) being sent or processed in Nordea’s real production environment.

**This User guide may be subject to changes.**

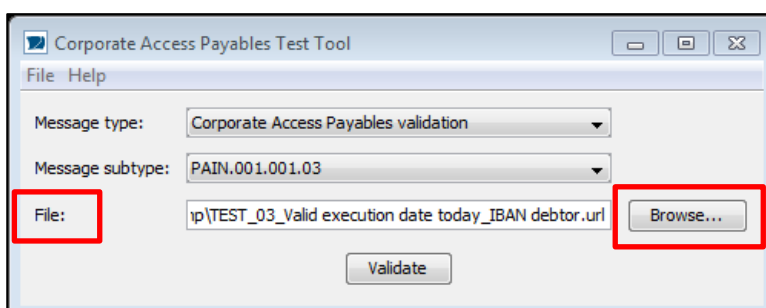
## 2 General overview of the Test Tool services

The Corporate Access Test Tool offers companies to test different messages/scenarios, such as:

- Corporate Access Envelope, incl. Signer Id and with our without Signature
- ISO20022 XML pain.001.001.03 and/or camt.055.001.01 Message(s), which will via the interface inform about potential syntactical as well as business rule errors
- Compliance checks information, i.e. ISO20022 XML pain.002.001.03, either via the interface or by downloading the result to your own server/location. Used for both pain.001.001.03 and camt.055.001.01
- Business content information, i.e. ISO20022 XML pain.002.001.03, with information about business rule(s) which may be vital to know/correct before entering into production with Corporate Access Payables. This information can be viewed via the interface or downloaded as file to your own server/location. Used for both pain.001.001.03 and camt.055.001.01.
- Business content information, i.e. ISO20022 XML camt.029.001.03 as a response for used cancellation request, with information about business rule(s) which may be vital to know/correct before entering into production with Corporate Access Payables. This information can be viewed via the interface or downloaded as file to your own server/location. Only used for camt.055.001.01.
- Debit advice information, i.e. ISO20022 XML camt.054.001.02 Debit Notification, either via the interface or by downloading the result to your own server/location

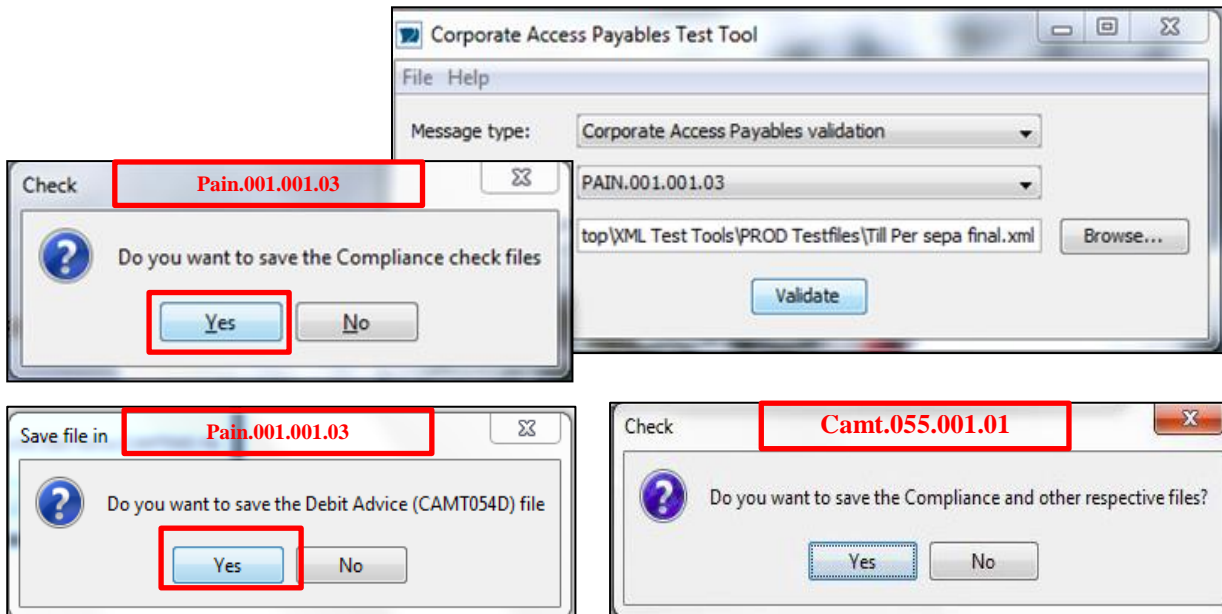
## 3 User guide for testing ISO20022 XML messages

The Test Tool enables companies to validate their created pain.001.001.03 and/or camt.055.001.01 message(s) as implemented by Corporate Access Payables. When starting the Test Tool, the below screen will be displayed.



Companies can validate their file by drag-and-drop it to the “File:” -field. The Tool will validate the file immediately, no need to press the “Validate” –button. Other option is to use the “Browse” button and choose the file from selected server at the company’s computer.

When selected pain.001.001.03 and/or camt.055.001.01 file added to the Corporate Access Test Tool, companies will receive a popup, with message “Do you want to save the Compliance check files”



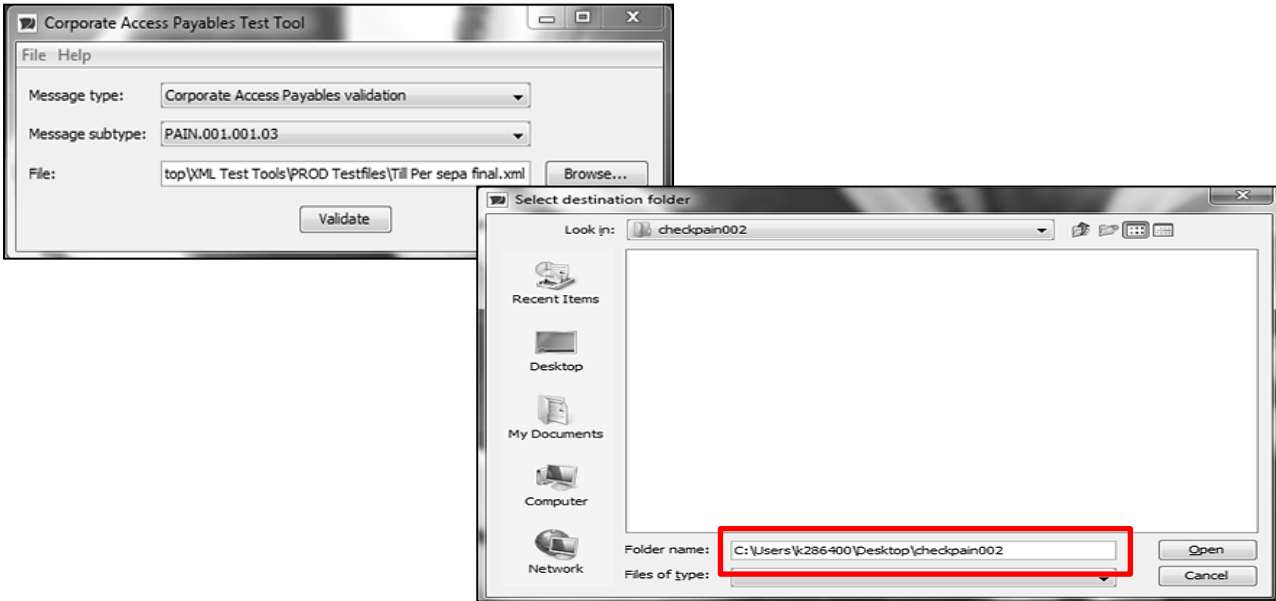
The purpose of this popup question is to enable companies to retrieve ISO20022 XML pain.002.001.03 message(s), both “Compliance” status reports as well as “content business” status reports as file(s)/messages. “Content business” status report will only apply as a response for cancellation Messages, in case errors found under Group Header or agreement (Creator) level.

If “Yes” option chosen, both “Compliance” and “Pain.002” (content) files will be saved and companies will be asked for which folder/location at company side the file/message should be stored/saved at. Companies can save the respective file(s)/messages under the “naming” they prefer.

Immediately after, when pain.001.001.03 used, companies will be asked the same question in relation to debit advice reporting, i.e. “Do you want to save the Debit Advice (CAMT054D) file” and same procedure will apply as for the “Compliance check” file.

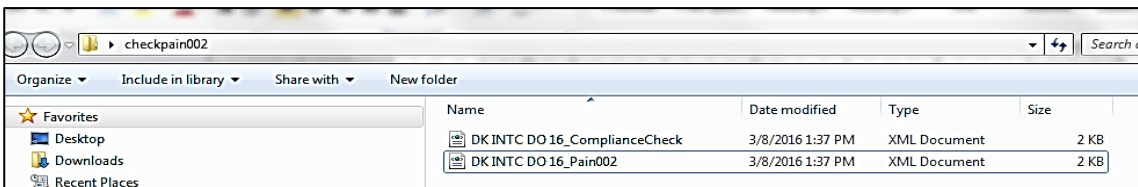
Same will occur if camt.055.001.01 used, i.e. a prompt will ask companies “Do you want to save the Compliance and other respective files” and same procedure will apply as for the above response messages created by the tool.

**Note:** The tool will automatically use companies file/message name and add either “Compliance Check”, “PAIN002”, “CAMT054D” or “CAMT.029”. In case same file/message used by company several times – then the tool will add an additional sequence number to the file “naming”.

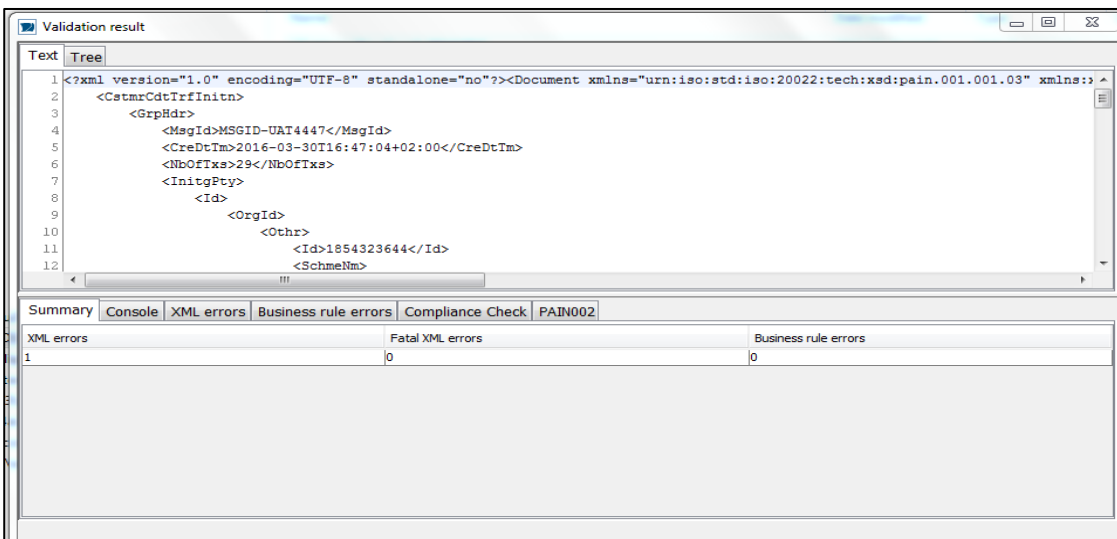


If pain.001.001.03 message accepted at “compliance” check level then tool will create two files, one with accepted “compliance” pain.002.001.03 message and an additional pain.002.001.03 message for “content business” validation response, which may in this case consist of both rejected and accepted transactions.

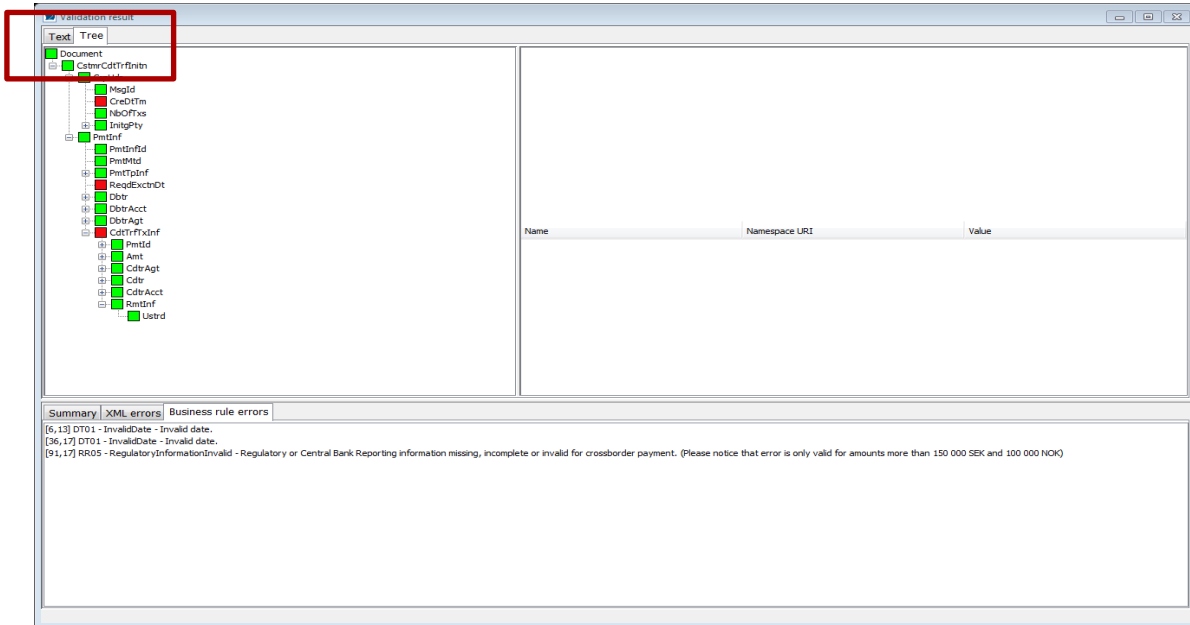
**Note:** The tool will always reply as if companies have chosen both accepted and rejected transactions for “content business” status report through Corporate Access Payables in production. The option for manual confirmation, which in production results in a “content business” status report with status “PDNG” (i.e. Pending) cannot be performed via this tool.



If option “No” used – then all validations and results will be present via the interface, incl. compliance and potential content validation errors. Once the Tool has validated the file/message, a window opens with validated file visible and possible errors or warnings within it.



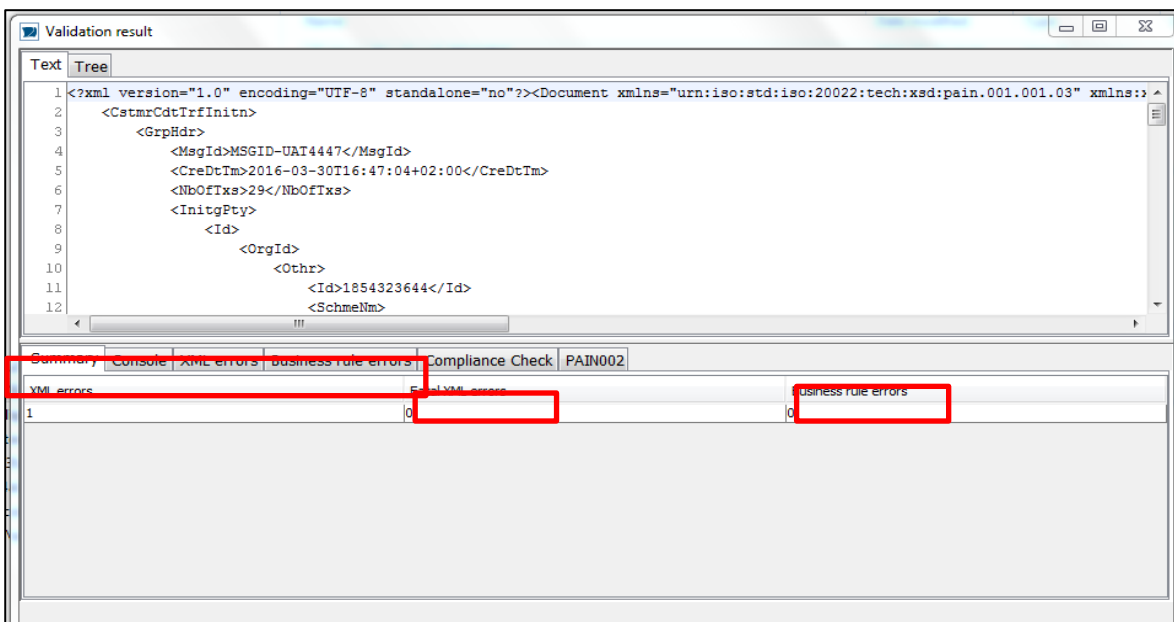
The validated file/message can also be viewed in tree format. Choose Tree-tab from the top of the window.



### 3.1 Errors

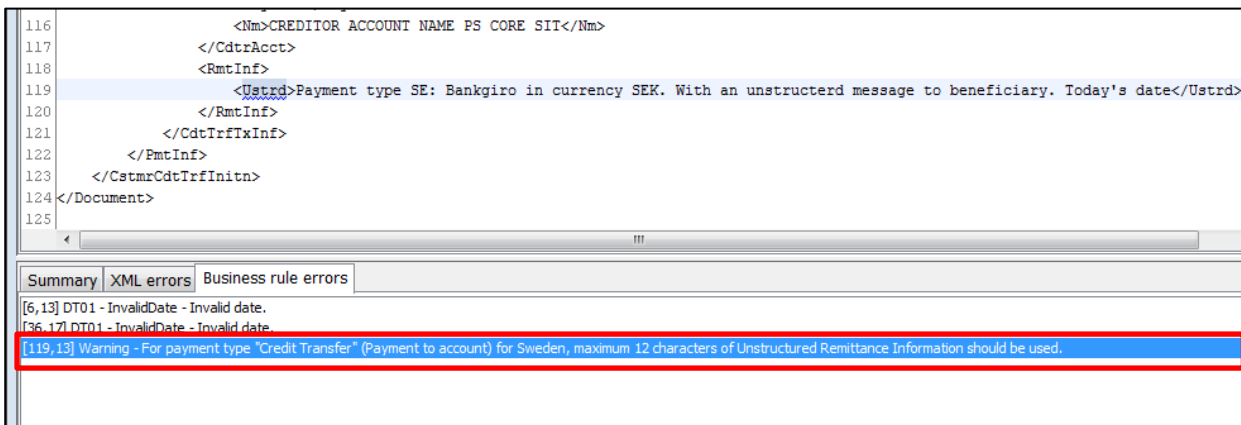
Below there are shown possible different kind of errors; XML errors, the Fatal XML errors and Business Rule errors. XML errors refer to XML schema, the ISO20222 standard. If the pain.001.001.03 or camt.055.001.01 message(s) does not comply with the ISO XML standard, the schema, then it will be shown as an XML error.

Business rule errors refer to Nordea’s rules for payments and/or cancellations on file. Payment and/or Cancellation on file can be according to XML schema but still contain business error, for example invalid customer identification. The error messages are displayed with the ISO20022 Error Codes, for example “DT01 – Invalid date”. Nordea has added additional text in some cases to be more specific about the nature of the error in question



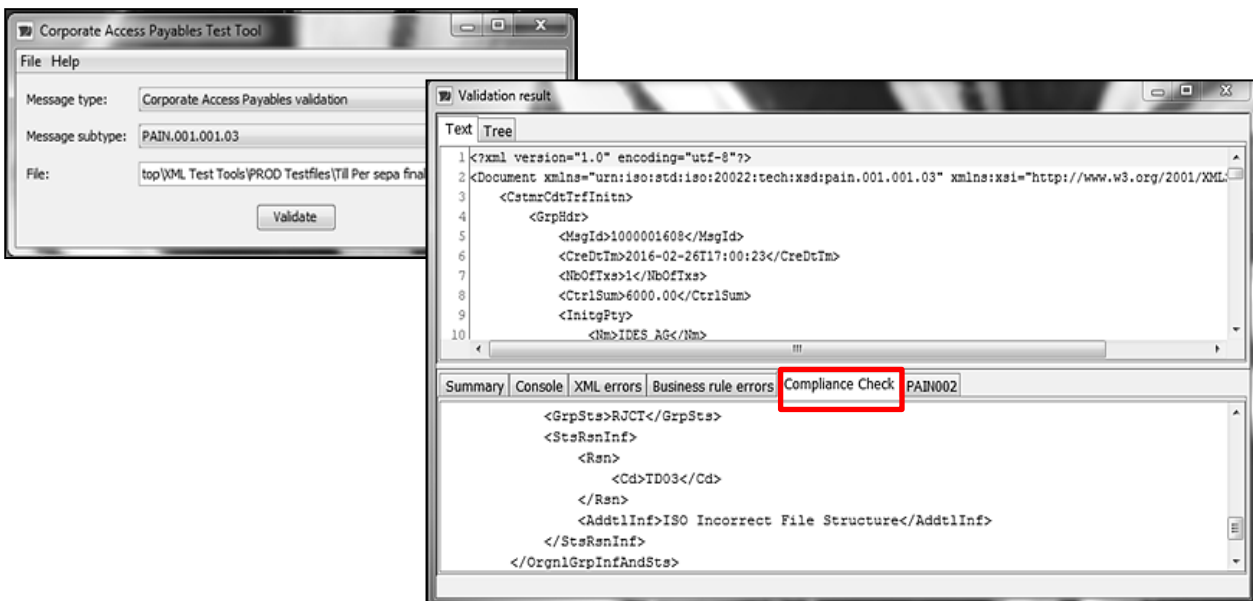
## 3.2 Warnings

In some cases Corporate Access Test Tool will, for uploaded pain.001.001.03 messages, show “Warnings” or “Info” in the error Tab. These are notifications for customers to help avoid typical mistakes or unnecessary information for certain payment types or cancellation requests. These “Warnings” or “Info” may also be a result due to the fact that the Test Tool does not have access to actual production systems in order to perform complete validations, why they merely reflect issues within the file/message that potentially could result in rejection if sent in production environment. All “Warnings” or “Info” are not always to be considered as errors and file is valid if there is only warning or info, but no errors.



## 3.3 Compliance check (pain.002.001.03)

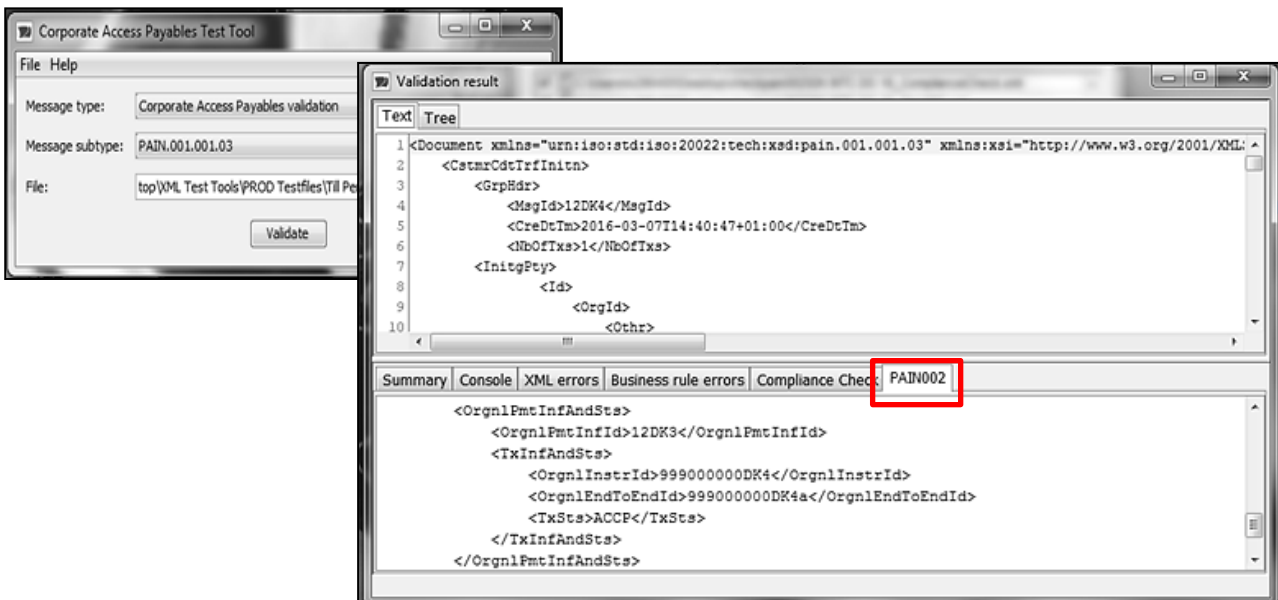
If file rejected at compliance check level, it will create separate pain.002.001.03 which can be saved in specified location on company side.



The result will at the same time be shown at the lower part of the tool’s two-folded screen, under a separate tab (i.e. “Compliance check”). In case of rejection on “compliance” level – then no “content business” validation will be available.

### 3.4 Content business validation (pain.002.001.03)

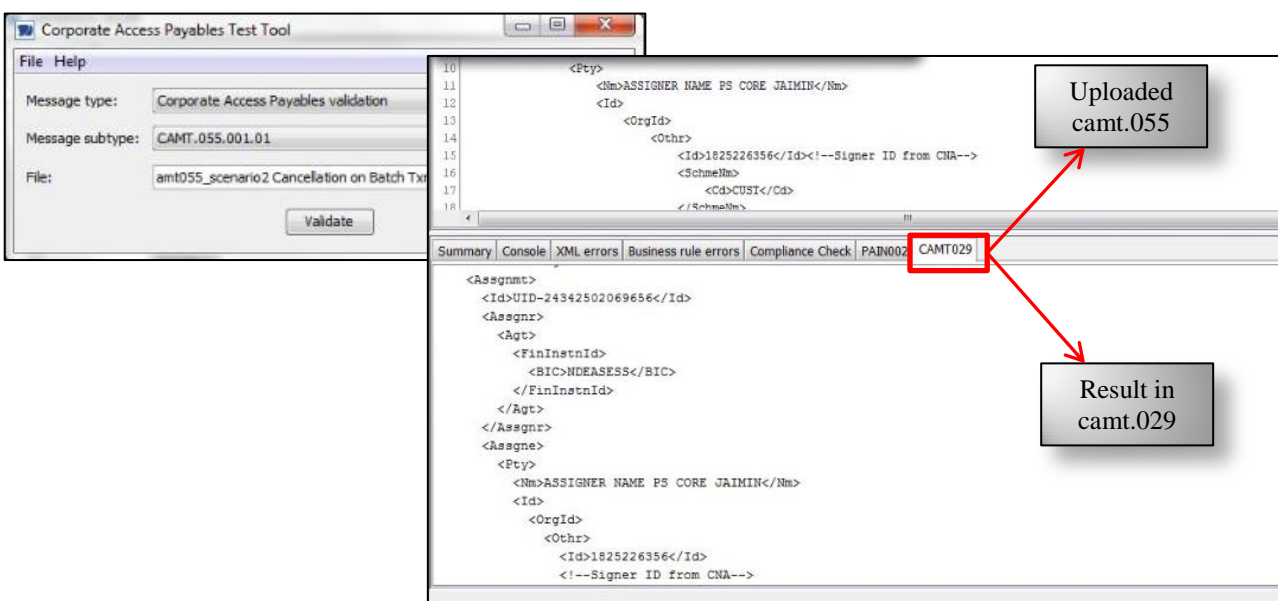
If the pain.001.001.03 or camt.055.001.01 has passed the “compliance” check, companies can use the tab “PAIN002” (Note: Only applicable in specific error cases for camt.055.001.01) and receive the result of the “content business” validation, either via the screen or as a separate message/file which can be stored by the Company on their own choice of location.



**Note:** The pain.001.001.03 and/or camt.055.001.01 message(s) and the result, i.e. pain.002.001.03 are shown at the same time.

### 3.5 Status report for cancellation requests (camt.029.001.03)

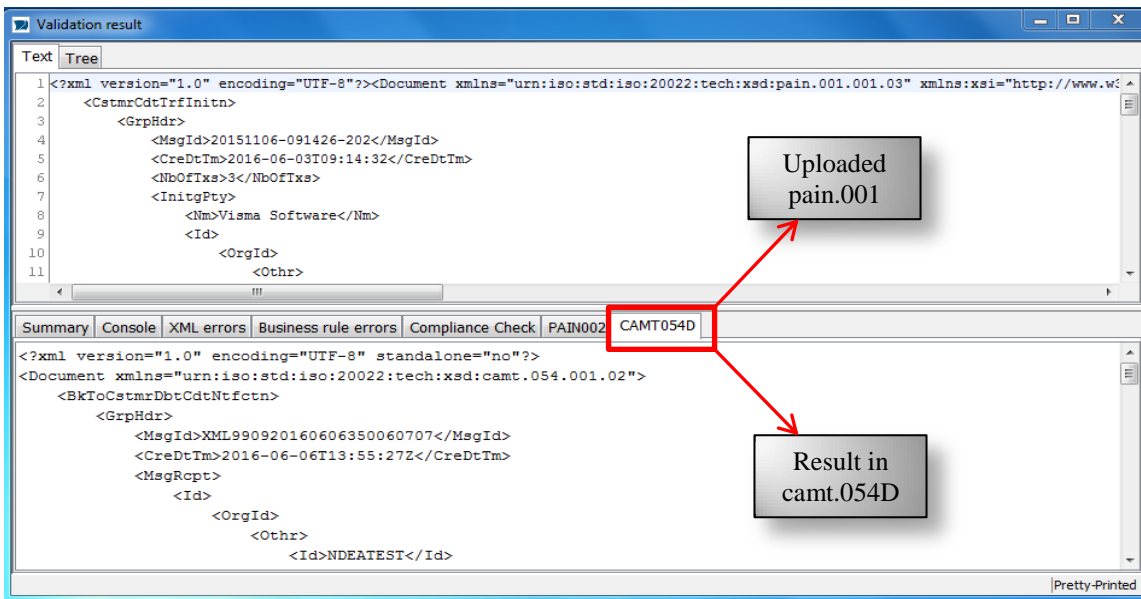
If the camt.055.001.01 has passed the “compliance” check, and no business errors found which are reported under the tab “PAIN002”, the result of the cancellation request will be received via the camt.029.001.03 message (*Response Of Investigation*) which will be displayed via the screen or as a separate message/file which can be stored by the Company on their own choice of location.





### 3.6 Debit advice reporting (camt.054.001.02 Debit Notification)

The debit advice reporting offers companies to receive through Corporate Access Test Tool a camt.054.001.02 message out of the uploaded pain.001.001.03. the camt.054 message can either be viewed via the UI – at the same time as the original uploaded pain.001 is shown on the screen. This enables companies to see where different references, identifications, amounts, etc. are reported back in the debit advice by Nordea. This message can also, as described above, be downloaded by companies as a separate file.



The debit advice reporting will also provide details about currency exchange calculations and how Nordea will apply its booking procedures for each selected payment. If no specific instructions used for batch booking in the pain.001 message then Nordea’s standard booking principal will apply, which is:

- Domestic payments = Batch booking will apply, if possible
- International (cross-border, incl. SEPA) payments = Single booking will apply

**Note:** Nordea will provide details of bookings, related to the up-loaded pain.001 as closely to real production as possible, however Nordea cannot guarantee that the provided information through Corporate Access Test Tool will in all cases be exactly as produced as when being sent or processed in reality. This due to many different parameters, as set by companies in the uploaded pain.001, such as batch booking request (i.e. “true” or “false”), different payment type handlings which might deviate from country to country due to local settlement or clearing procedures. In addition exchange rate calculations involving all different kind of currencies, charges used by Nordea, etc. etc. will not reflect the accurate rates or charges that Nordea may apply form time to time.

### 3.7 If Corporate Access Test Tool do not respond correctly

In case Corporate Access Test Tool don’t respond with either “Compliance” check, pain.002 (content) or camt.054 in accordance with this description, then please try to close down the tool entirely and restart it again. If still not responding as expected, please contact our support at:

**Service Support for Corporate Access Payables**  
 Telephone: (+46) 771 77 6991

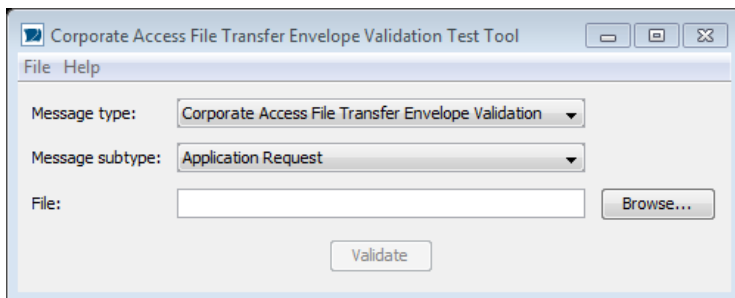
## 4 Corporate Access Envelope Validation tool

Companies can use Nordea's Content Signature Test Tool for checking the formal and, to some extent, logical correctness of the structure of the envelope and signature formed by the company's software.

The tool is easy to use, and companies will receive a reply right away. No data on the message is stored in Nordea's systems. The tool uses the Java Web Start application, so companies will need at least version 1.5 of the Java Runtime module.

Verifications provided for the XML Envelope input file:

- Schema validation of the XML envelope input file.
- XML digital Signature validation and the Public key presence
- Validation of Mandatory elements and its expected order in Envelope
- Validation that payload in file content element Base64 encoded
- Compliance check of SignerID towards Payment files initiating partyID.
- Show validation text and business rules in summary tabs.
- Validation of decoding BASE64 content.
- Provide the payment file disk (payload).



### 4.1 Checking the message

Select the Corporate Access Envelope validation in the drop down menu (pre-selected)

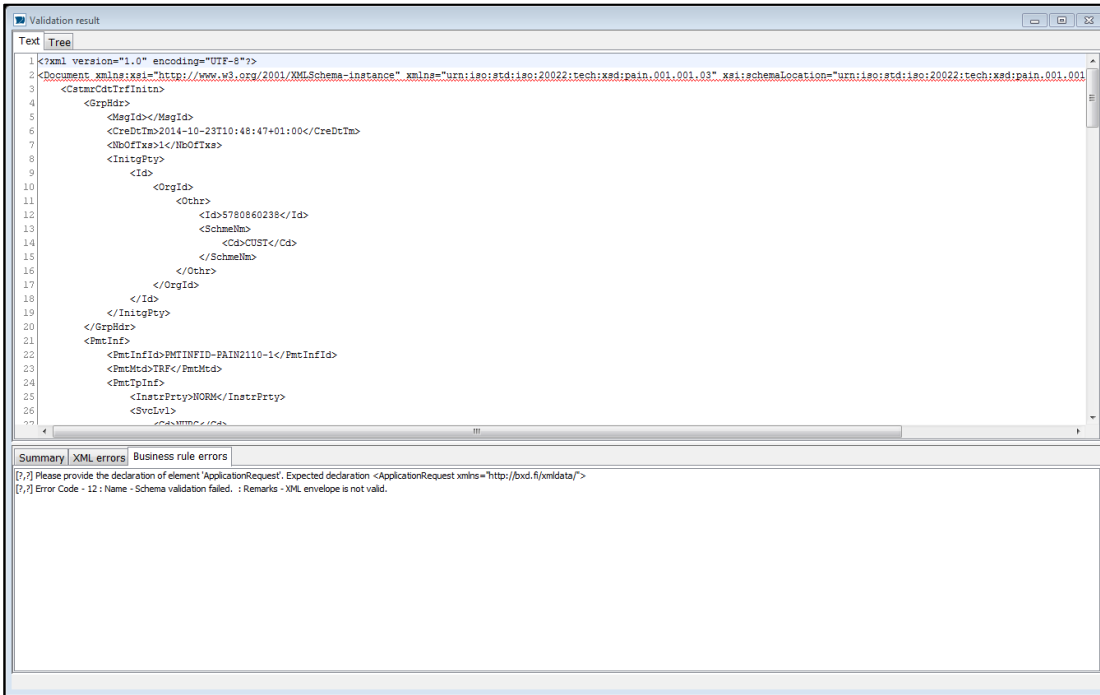
Select the XML Envelope test file to be checked from your files with the Browse button (drag & drop also supported)

You will get the result in a new screen by pressing the Validate button.

The summary will provide the test validation result including the number of error based on processing rules and business rules errors. The Envelope content will be shown in the screen window.

Only when the Envelope and Signature validation has been successful, the decoded XML payment file will be stored at your folder.

Go to the upload tool and select "File – Show decoded content" to access the Payment file content.



[Link to the Envelope test tool](#)

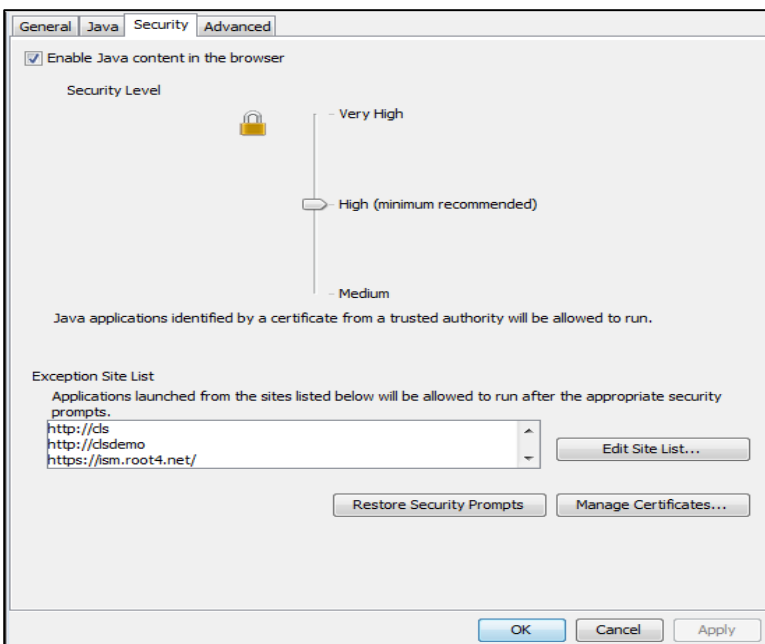
## 5 Corporate Access Test Tool technical help

If the tool fails to start, please follow the instructions below.

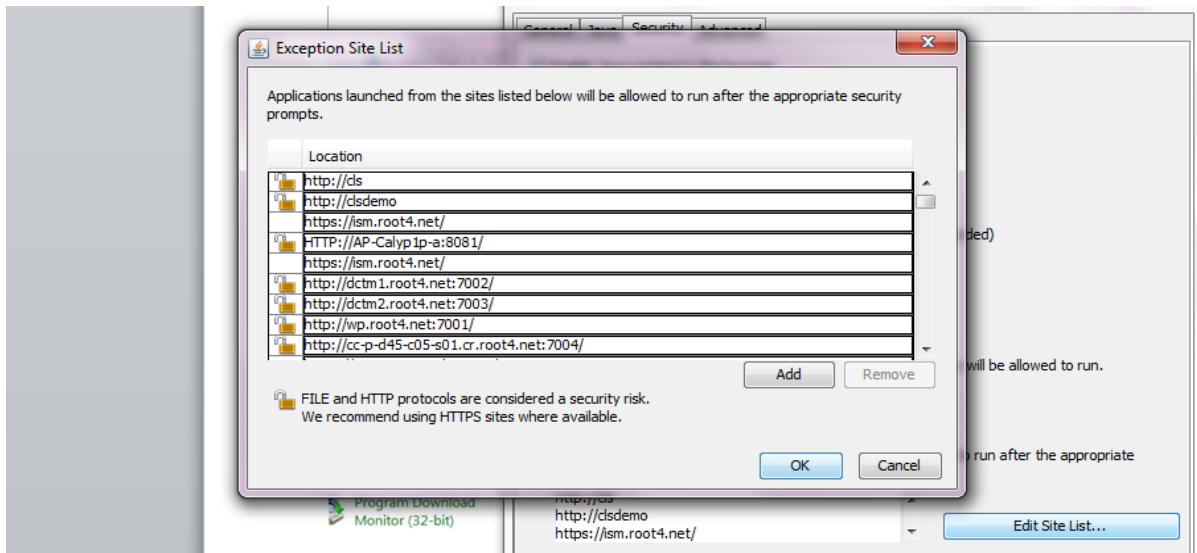
Steps to enable the Test tool:

1. Go to Control Panel and open Java, go to Security sheet.

Windows → Control Panel → Java → Security



2. Click “Edit Site List” and then click add. Copy paste the below link in the empty row in the end of the table.
  - a. For Corporate Access Test tool <https://girolink.plusgirot.se/jnlp/glwsjl33.jnlp>
  - b. If you are facing trouble with starting the Corporate Access Envelope Validation tool then copy link <https://girolink.plusgirot.se/jnlp/glwsjl33.jnlp>

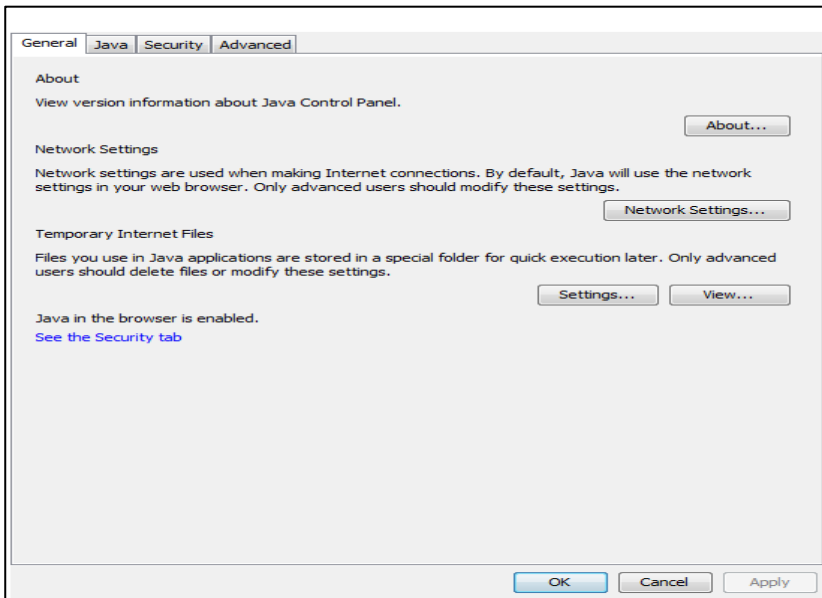


3. Click OK and close the Control Panel.
4. Click the link below to start the Test tool  
<https://girolink.plusgirot.se/jnlp/glwsjl33.jnlp>

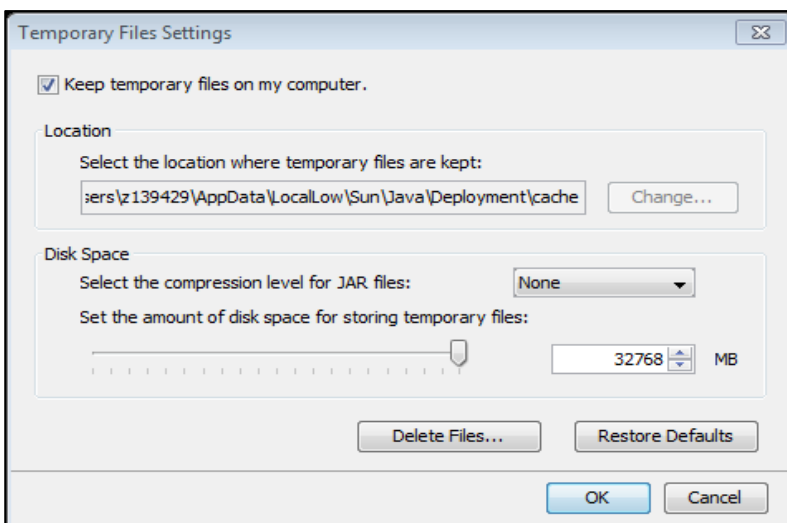
## 5.1 If Test tool does not start

If there are technical issues with the test tool, deleting Java cache can help.  
Steps to delete Java cache:

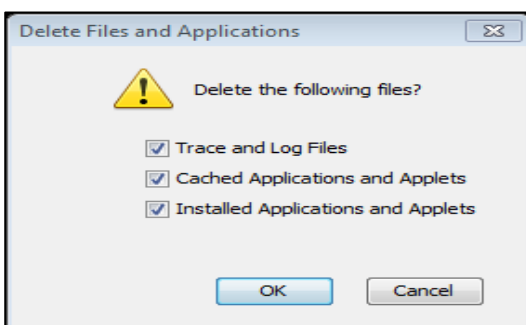
1. Go to Control Panel and open Java, go to General -sheet.
2. Click Settings
3. Then Delete Files
4. Tick all the boxes and click OK.



5. Click on Delete files



6. Tick all boxes and click OK.



7. Close all Control panel windows, Corporate Access Test tool should be ready to use now.

8. [Link](#) to start the tool.