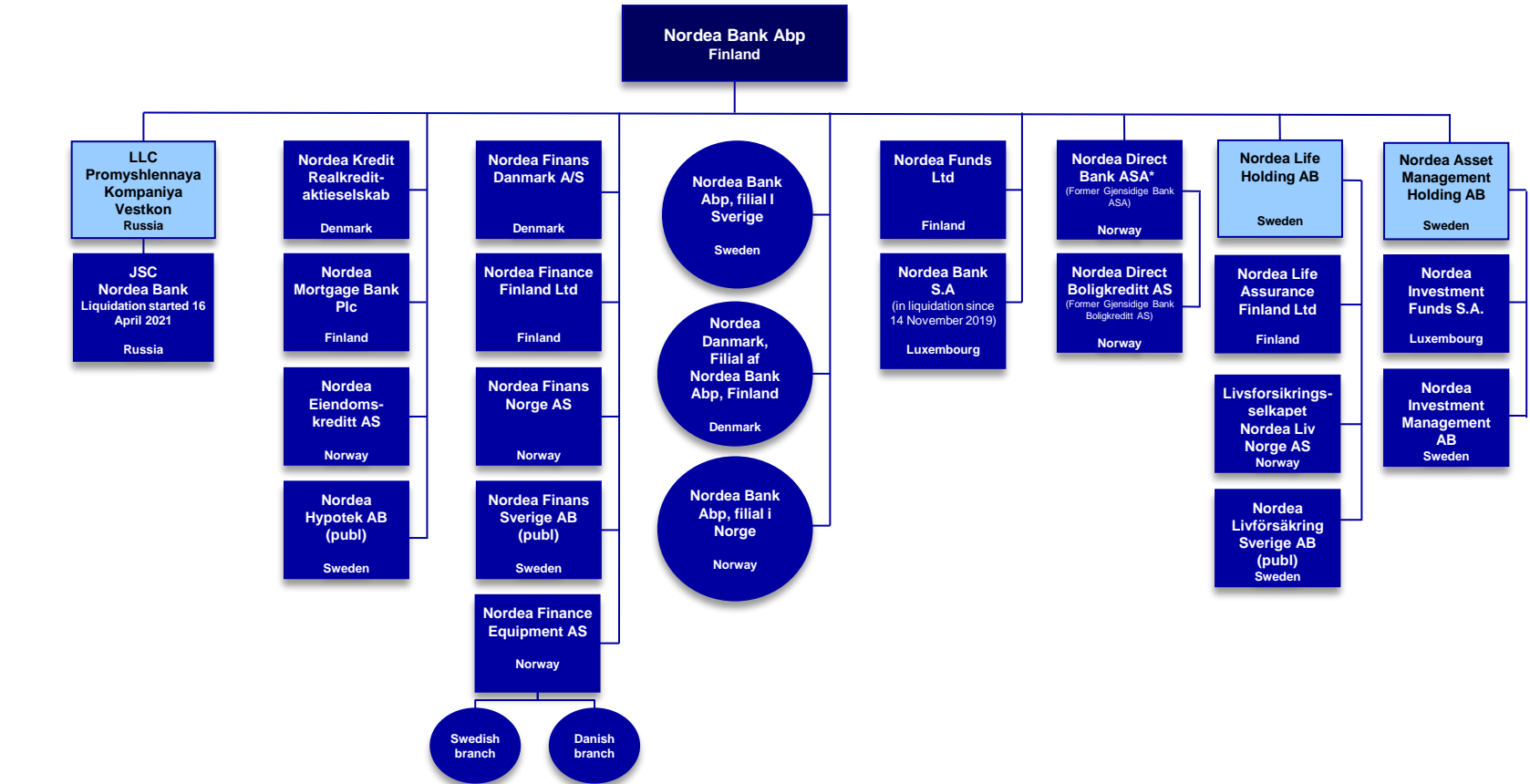


# Main legal structure

As of 29 April 2021



● Branch – Nordea Bank Abp also operates branches in Estonia, Poland, London, New York, Shanghai and Singapore (The Frankfurt branch closed down by Dec 2020)

■ Legal entity

■ Holding company

\* Nordea Bank Abp and Nordea Direct Bank ASA (former Gjensidige Bank ASA) have signed a merger plan on 12 June 2019. The merger between Nordea Direct Bank ASA and Nordea Bank Abp is ongoing, with the target completion date to be determined. The completion is subject to regulatory approval.